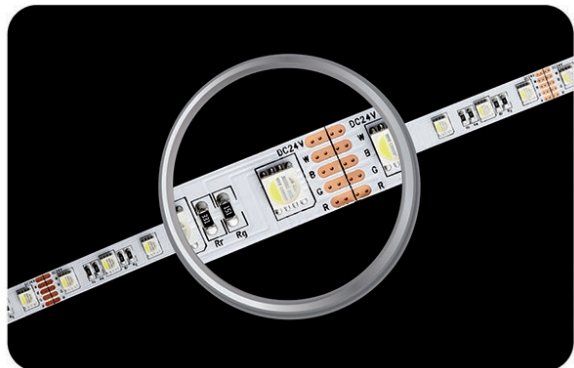


5.8W/FT LOVO™FLEX LED RGBW 4-in-1 FLEXIBLE TAPE LIGHTING



Client:

Project:

Type:

Order Code:

Quantity:

Lovo™Flex RGBW SMD 5060 Flexible Strip is our original premium quality RGBW strip. The 5060 SMD LEDs not only provide brilliant brightness but also fabulous color changing properties, over 16 million colors to be exact. The New 4 in 1 LED has Red, Green, Blue and Warm White Quad LED Chip. With our pre-programmed RF remote RGBW Controller or DMX interface decoder, you will be able to reach almost any color you desire.

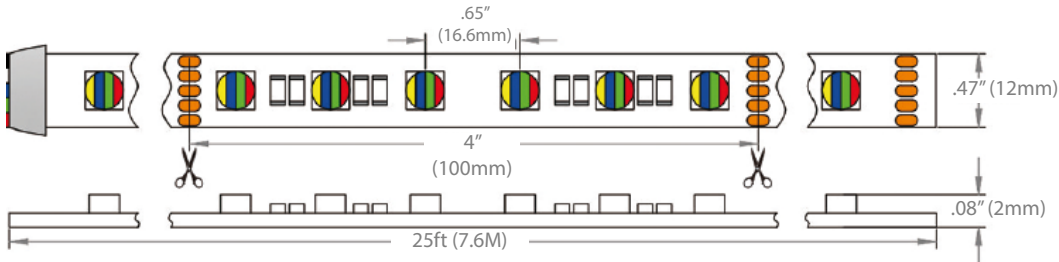
SPECIFICATIONS

Product Number	6070-FL-5.8W24V-RGBW-4in1
Voltage	24VDC
Length	20Ft (6M) or 100Ft (30M)
Color Temperature	RGBW Mix 100%
Wattage	5.8 Watts/Ft / 19 Watts/M
Lumens	357 lm/Ft / 1170 lm/M (Mix 100% RGBW)
	34 lm/Ft / 110 lm/M (Red)
	128 lm/Ft / 420 lm/M (Green)
	28 lm/Ft / 90 lm/M (Blue)
	190 lm/Ft / 620lm/M (RGB White, 100%)
	137 lm/Ft /450 lm/M (White 2700K)
	168 lm/Ft / 550 lm/M (White 6000K)
Wave Length	650nm to 750nm (Red)
	490nm to 575nm (Green)
	420nm to 490nm (Blue)
Maximum Run	25 Ft / 7.6 M
Beam Angle	120 degree
Dimming	Yes
Material	White PCB, Tesa® Tape Backing
Cuttability	Every 4" (100mm)
IP Rating	IP43 or IP67 (other IP options Available Upon Request)
Dimensions	12mm (.47mm)W x 2mm (.08")H x Reel Length
Switching	Hardwire or Plug-in
Mounting	Attached Tesa® Tape or Extrusions* (Refer to Page 3)
Material	White PCB, Copper Strip, Tesa® Tape Backing
LED Type & Size	Premium Epistar 5060
LED Qty	18 LEDs/ft / 60 LEDs/M
Rated Life	50,000 Hours
Warranty	3 Years
Certifications	cULus 469399

5.8W/FT LOVO™FLEX LED RGBW 4-in-1 FLEXIBLE TAPE LIGHTING



DIMENSIONS



ORDER CODES

6070-FL-5.8W24V-RGBW-4in1- -
White Temp: 27K = 2700K IP: IP43
60K = 6000K IP67

RELATED PRODUCTS

POWER SUPPLIES *More Power Supplies Available Upon Request



PLUG-IN

Item #5000-PSU-20W24V

20 Watt 24 Volt with FC Connector

Item #5000-PSU-60W24V

60 Watt 24 Volt with FC Connector

Item #5000-PSU-96W24V

96 Watt 24 Volt with FC Connector



HARDWIRE CV

**NON Dimming Constant Voltage,
Class 2 UL Listed**

Item #5015-PSU-60W24V-JB-CL2

60W 24Vdc 120-277V PSU c/w JBox,
CL2, Non Dim IP20, UL Listed

Item #5015-PSU-96W24V-JB-CL2

96W 24Vdc 120-277V PSU c/w JBox,
CL2, Non Dim IP20, UL Listed

Item #5040-PSU-2X96W24V-JB-CL2

2x96W 24Vdc 120-277V PSU c/w JBox,
CL2, Non Dim IP20, UL Listed

Item #5040-PSU-3X96W24V-JB-CL2

3x96W 24Vdc 120-277V PSU c/w JBox,
CL2, Non Dim IP20, UL Listed

Item #5040-PSU-4X96W24V-JB-CL2

4x96W 24Vdc 120-277V PSU c/w JBox,
CL2, Non Dim IP20, UL Listed

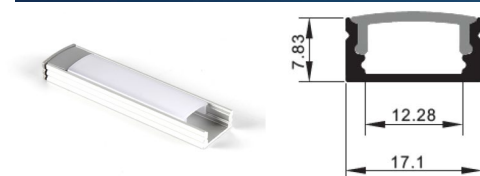
5.8W/FT LOVO™FLEX LED RGBW 4-in-1 FLEXIBLE TAPE LIGHTING



RELATED PRODUCTS

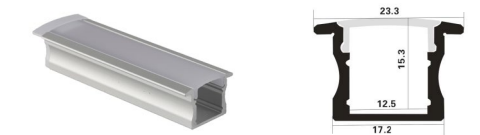
ALUMINUM PROFILE EXTRUSIONS (Please see individual channel spec sheets for accessory details)

*More Aluminum Profile Extrusions Available Upon Request



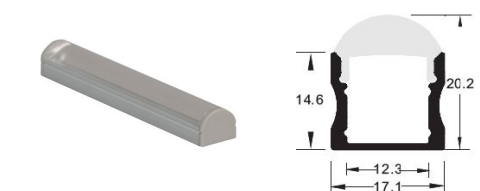
Item #6100-AP-SM-1708

Slim Aluminum LED Profile with Frosted Cover
.67" W x .31" H x 8ft L
17.1mm W x 7.83mm H x 2400mm L
C/W 2 End Caps and 2 Clips



Item #6100-AP-RC-2515

Low Profile- Recessed, Slim Height
.98" W X .6" H x 8ft L
25mm W x 15mm H x 2400mm L
C/W 2 End Caps and 2 Clips



Item #6100-AP-SM-1715-30DG

Item #6100-AP-SM-1715-60DG

Slim Aluminum LED Profile
with 30 or 60 Degree Clear Lens
.67" W x .6" H x 8ft L
17mm W x 15mm H x 2400mm L
C/W 2 End Caps and 2 Clips



Item #6100-AP-SM-1715

Aluminum Led Tapered Profile With Cover
.67" W x .60" H x 8ft
17.1mm W x 15mm H x 2400mm L
C/W 2 End Caps and 2 Clips



Item #6100-AP-SM-2119ABC

Aluminum Led Profile With Frosted Cover

A- Round Frosted Lens Profile

.77" W x .79" H x 8ft
19.5mm W x 19.95mm H x 2400mm L



B- Square Frosted Lens Profile

.77" W x .83" H x 8ft
19.5mm W x 21.05mm H x 2400mm L



C-Rectangle Frosted Lens Profile

.77" W x 1.42" H x 8ft
19.5mm W x 36.07mm H x 2400mm L
C/W 2 End Caps and 2 Clips

5.8W/FT LOVO™FLEX LED RGBW 4-in-1 FLEXIBLE TAPE LIGHTING



RELATED PRODUCTS

LOVO™FC 5C RGBW “FAST CONNECT” CABLE SYSTEM (Please see individual spec sheets for accessory details)



Solder Tip - Male

Item #8170-FC-M-5C-1ft

1-24V Max 8 Amps

1ft (12" / 300mm) Long

IP67

Male to Raw Wire Barrel
Connector

Solder Tip - Female

Item #8170-FC-F-5C-1ft

1-24V Max 8 Amps

1ft (12" / 300mm) Long

IP67

Female to Raw Wire Barrel
Connector

LOVO™FC 5C RGBW “FAST CONNECT” SPLITTERS



MALE TO 2X FEMALE RGBW Y-SPLITTER CABLE

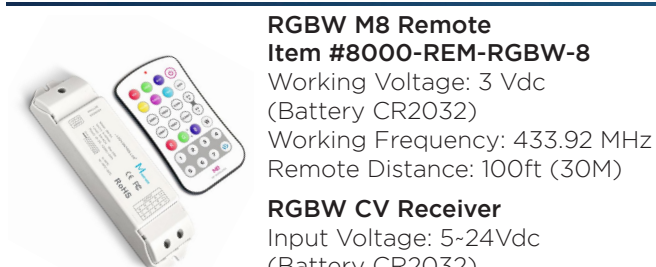
Item #8170-FC-2Y-5C

24 Max 8 Amps IP67

18" (500mm) Long

RGBW 2-Way Y Splitter

LED RGBW CONTROLLERS *More Lighting Controllers Available Upon Request



RGBW M8 Remote

Item #8000-REM-RGBW-8

Working Voltage: 3 Vdc

(Battery CR2032)

Working Frequency: 433.92 MHz

Remote Distance: 100ft (30M)

RGBW CV Receiver

Input Voltage: 5-24Vdc

(Battery CR2032)

Current Load: 5Ax4CH Max 20A

Max Output Power: (0-25W 120W) x 4CH

Protection: Short Circuit / Over-load



RGBW Dial Controller

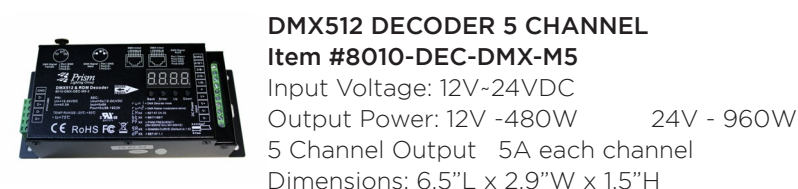
Item #8000-CTRL-RGBW-DIAL

Input Voltage: 12-24Vdc

Output Current: 6Ax3CH Output

Power: 220W(12V)/440W(24V)

Remote Range: 30m (100ft)



DMX512 DECODER 5 CHANNEL

Item #8010-DEC-DMX-M5

Input Voltage: 12V-24VDC

Output Power: 12V -480W 24V - 960W

5 Channel Output 5A each channel

Dimensions: 6.5"L x 2.9"W x 1.5"H

*Other Control Options Available Upon Request

*Wifi, Bluetooth, Smart, & DMX Control compatible with most PWM type controllers.

5.8W/FT LOVO™FLEX LED RGBW 4-in-1 FLEXIBLE TAPE LIGHTING



INSTALLATION

- For outdoor use, make sure all connectors are sealed with silicone and shrink tube and drivers are housed in weatherproof enclosures.
- M Series Dimmer (PWM) must have 24V DC input (not line voltage)
- Dimming drivers are compatible with most triac, ELV and MLV dimmers with 10-100% light control
- Multiple extrusions are available for use in surface mount and recessed applications
- Simple Guide to sizing power supply with 5.8W/Ft LovoFlex Tape Lighting (based on 80% lighting wattage load on power)

Power Supply

Max. Number of Feet per Power Supply

20 Watt 24V DC Power Supply

3 Feet

30 Watt 24V DC Power Supply

4.5 Feet

60 Watt 24V DC Power Supply

8.5 Feet

96 Watt 24V DC Power Supply

13.5 Feet

*For Multi 96W Output Class 2 Power Supplies each output can run maximum 13.5 Feet.

*If beyond 25ft of LED Tape lighting, split into 2 circuits on 1 driver or divide the load based on max continuous run.

*Recommended Max 80%

*Larger power supplies available upon request.

INFORMATIONAL VIDEOS

For more information, watch the LOVO™ Flexible Strip Series videos from our YouTube Channel,
<https://www.youtube.com/user/PrismLighting>



<https://youtu.be/kseubaC4rog>



<https://youtu.be/gcFl-rX73hA>



<https://youtu.be/kseubaC4rog>



<https://youtu.be/kseubaC4rog>