

MAXRUN 2.25W/FT LOVO™FLEX RGBW CONSTANT CURRENT LED FLEXIBLE TAPE LIGHTING



Client:

Project:

Type:

Order Code:

Quantity:

Lovo™Flex MAXRUN Strips allows you to run low voltage Flexible LED Strip lighting further than ever before with continuous runs of 50ft (15M) to 65ft (20M). From accent lighting to compelling action lighting, Lovo™Flex MAXRUN Strips make your image stand out from the crowd! It provides an affordable, low energy consumption solution where stability and longevity are paramount. Manufactured with top-tier authentic premium Epistar LED chips, the SMD LED Flexible Strips are built to last. In addition to low energy consumption, these strips operate at a low temperature which means they can be used just about anywhere. They are designed for interior and exterior use and can bend and twist in just about any direction imaginable.

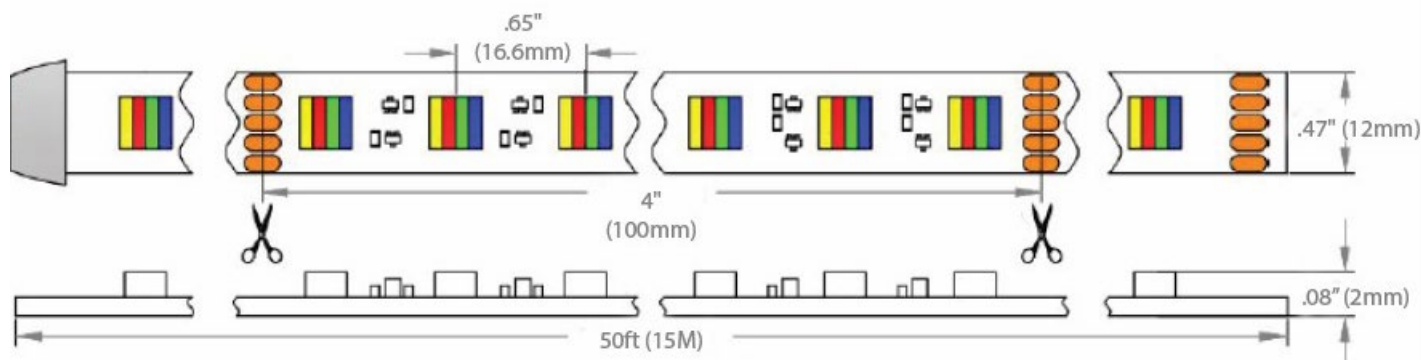
SPECIFICATIONS

Product Number	6060-FLCC-2.25W24V-RGBW-4in1
Wattage	2.25 Watts/Ft / 7.2 Watts/M
Voltage	24VDC
Length	20Ft (6M) and 50Ft (15M)
Color Temperature	RGBW Mix 100%
Wattage	2.25 Watts/Ft / 7.2 Watts/M
Lumens	21 lm/Ft / 70 lm/M (Red) 67 lm/Ft / 220 lm/M (Green) 12 lm/Ft / 40lm/M (Blue) 145 lm/Ft / 330lm/M (RGBW White, 100%) 38lm/Ft / 124lm/M (White 3000K) 45lm/Ft / 150lm/M (White 6000K)
Wave Length	650nm to 750nm (Red) 490nm to 575nm (Green) 420nm to 490nm (Blue)
CRI	>90
Maximum Run	60Ft / 18M
Beam Angle	120 degree
Material	White PCB, Tesa® Tape Backing
Cuttability	Every 4" (100mm)
LED Qty	18 LEDs/ft / 60 LEDs/M
Dimming	Yes
Dimensions	12mm (.49") W x 1mm (.04") H x Reel Length
IP Rating	IP43 (IP65 or Other IP options Available Upon Request)
Switching	Hardwire or Plug-in
Mounting	Attached Tesa® Tape or Extrusions
LED Type & Size	Premium Epistar 5060
Rated Life	50,000 Hours
Warranty	5 Years
Certifications	cULus 469399

MAXRUN 2.25W/FT LOVO™FLEX RGBW CONSTANT CURRENT LED FLEXIBLE TAPE LIGHTING



DIMENSIONS



ORDER CODES

6060-FLCC-2.25W24V-RGBW-4in1- -
White Temp: 30K = 3000K IP: IP43
60K = 6000K IP65

RELATED PRODUCTS

POWER SUPPLIES *More Power Supplies Available Upon Request



PLUG-IN

Item #5000-PSU-20W24V

20 Watt 24 Volt with FC Connector

Item #5000-PSU-60W24V

60 Watt 24 Volt with FC Connector

Item #5000-PSU-96W24V

96 Watt 24 Volt with FC Connector



HARDWIRE CV

**NON Dimming Constant Voltage,
Class 2 UL Listed**

Item #5015-PSU-60W24V-JB-CL2

60W 24Vdc 120-277V PSU c/w JBox,
CL2, Non Dim IP20, UL Listed

Item #5015-PSU-96W24V-JB-CL2

96W 24Vdc 120-277V PSU c/w JBox,
CL2, Non Dim IP20, UL Listed

Item #5040-PSU-2X96W24V-JB-CL2

2x96W 24Vdc 120-277V PSU c/w JBox,
CL2, Non Dim IP20, UL Listed

Item #5040-PSU-3X96W24V-JB-CL2

3x96W 24Vdc 120-277V PSU c/w JBox,
CL2, Non Dim IP20, UL Listed

Item #5040-PSU-4X96W24V-JB-CL2

4x96W 24Vdc 120-277V PSU c/w JBox,
CL2, Non Dim IP20, UL Listed

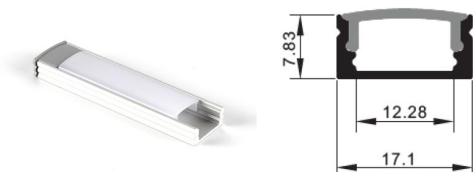
MAXRUN 2.25W/FT LOVO™ FLEX RGBW CONSTANT CURRENT LED FLEXIBLE TAPE LIGHTING



RELATED PRODUCTS

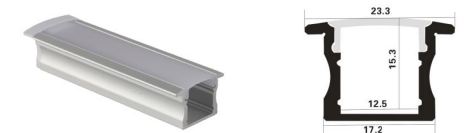
ALUMINUM PROFILE EXTRUSIONS (Please see individual channel spec sheets for accessory details)

*More Aluminum Profile Extrusions Available Upon Request



Item #6100-AP-SM-1708

Slim Aluminum LED Profile with Frosted Cover
.67" W x .31" H x 8ft L
17.1mm W x 7.83mm H x 2400mm L
C/W 2 End Caps and 2 Clips



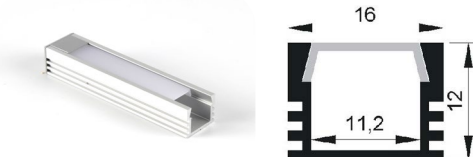
Item #6100-AP-RC-2515

Low Profile- Recessed, Slim Height
.98" W X .6" H x 8ft L
25mm W x 15mm H x 2400mm L
C/W 2 End Caps and 2 Clips



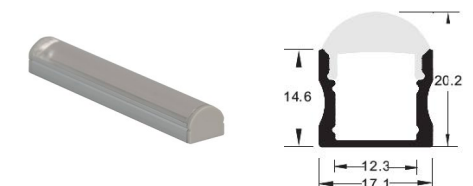
Item #6100-AP-SM-1919

Slim Aluminum Recessed LED Profile with Frosted Cover
.75" W x .75" H x 8ft L
19mm W x 19mm H x 2400mm L
C/W 2 End Caps and 2 Clips



Item #6100-AP-SM-1612

Slim Aluminum Recessed LED Profile with Frosted Cover
.63" W x .47" H x 8ft L
16mm W x 12mm H x 2400mm L
C/W 2 End Caps and 2 Clips



Item #6100-AP-SM-1715-30DG

Item #6100-AP-SM-1715-60DG

Slim Aluminum LED Profile with 30 or 60 Degree Clear Lens
.67" W x .6" H x 8ft L
17mm W x 15mm H x 2400mm L
C/W 2 End Caps and 2 Clips



Item #6100-AP-SM-1715

Aluminum Led Tapered Profile With Cover
.67" W x .60" H x 8ft L
17.1mm W x 15mm H x 2400mm L
C/W 2 End Caps and 2 Clips



Item #6100-AP-SM-2119ABC

Aluminum Led Profile With Frosted Cover

A- Round Frosted Lens Profile

.77" W x .79" H x 8ft L
19.5mm W x 19.95mm H x 2400mm L



B- Square Frosted Lens Profile

.77" W x .83" H x 8ft L
19.5mm W x 21.05mm H x 2400mm L



C-Rectangle Frosted Lens Profile

.77" W x 1.42" H x 8ft L
19.5mm W x 36.07mm H x 2400mm L
C/W 2 End Caps and 2 Clips

MAXRUN 2.25W/FT LOVO™FLEX RGBW CONSTANT CURRENT LED FLEXIBLE TAPE LIGHTING

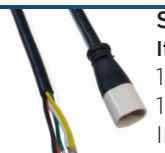


RELATED PRODUCTS

LOVO™FC 5C RGBW “FAST CONNECT” CABLE SYSTEM (Please see individual spec sheets for accessory details)



Solder Tip - Male
Item #8170-FC-M-5C-1ft
1-24V Max 8 Amps
1ft (12" / 300mm) Long
IP67
Male to Raw Wire Barrel
Connector



Solder Tip - Female
Item #8170-FC-F-5C-1ft
1-24V Max 8 Amps
1ft (12" / 300mm) Long
IP67
Female to Raw Wire Barrel
Connector



RGBW Extension Cables
Item #8170-FC-EXT-4C-3ft
#8170-FC-EXT-4C-10ft
Available in 3ft or 10ft long
24 Max 8 Amps
IP67
Male to Female Extension
Barrel Connector Cables

LOVO™FC 5C RGBW “FAST CONNECT” SPLITTERS



MALE TO 2X FEMALE RGBW Y-SPLITTER CABLE
Item #8170-FC-2Y-5C
24 Max 8 Amps IP67
18" (500mm) Long
RGBW 2-Way Y Splitter

LED RGBW CONTROLLERS *More Lighting Controllers Available Upon Request



RGBW M8 Remote
Item #8000-REM-RGBW-8
Working Voltage: 3 Vdc
(Battery CR2032)
Working Frequency: 433.92 MHz
Remote Distance: 100ft (30M)

RGBW CV Receiver
Input Voltage: 5-24Vdc
(Battery CR2032)
Current Load: 5Ax4CH Max 20A
Max Output Power: (0-25W 120W) x 4CH
Protection: Short Circuit / Over-load



RGBW Dial Controller
Item #8000-CTRL-RGBW-DIAL
Input Voltage: 12-24Vdc
Output Current: 6Ax3CH Output
Power: 220W(12V)/440W(24V)
Remote Range: 30m (100ft)



DMX512 DECODER 5 CHANNEL
Item #8010-DEC-DMX-M5
Input Voltage: 12V-24VDC
Output Power: 12V -480W 24V - 960W
5 Channel Output 5A each channel
Dimensions: 6.5"L x 2.9"W x 1.5"H

*Other Control Options Available Upon Request

*Wifi, Bluetooth, Smart, & DMX Control compatible with most PWM type controllers.

MAXRUN 2.25W/FT LOVO™FLEX RGBW CONSTANT CURRENT LED FLEXIBLE TAPE LIGHTING



INSTALLATION

- For outdoor use, make sure all connectors are sealed with silicone and shrink tube and drivers are housed in weatherproof enclosures.
- M Series Dimmer (PWM) must have 24V DC input (not line voltage)
- Dimming drivers are compatible with most triac, ELV and MLV dimmers with 10-100% light control
- Multiple extrusions are available for use in surface mount and recessed applications
- Simple Guide to sizing power supply with 2.25W/Ft LovoFlex Tape Lighting (based on 80% lighting wattage load on power)

Power Supply

Max. Number of Feet per Power Supply

20 Watt 24V DC Power Supply

7 Feet

30 Watt 24V DC Power Supply

10 Feet

60 Watt 24V DC Power Supply

21 Feet

96 Watt 24V DC Power Supply

35 Feet

*For Multi 96W Output Class 2 Power Supplies each output can run maximum 35 Feet.

*If beyond 25ft of LED Tape lighting, split into 2 circuits on 1 driver or divide the load based on max continuous run.

*Recommended Max 80%

*Larger power supplies available upon request.

INFORMATIONAL VIDEOS

For more information, watch the LOVO Flexible Strip Series videos:



<https://youtu.be/kseubaC4rog>



<https://youtu.be/gcFl-rX73hA>



<https://youtu.be/kseubaC4rog>



<https://youtu.be/kseubaC4rog>