

LOVO™ Flexible Silicone LED Profile

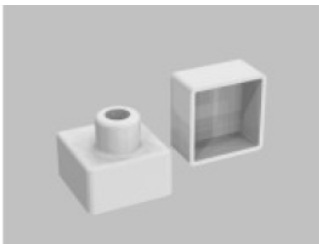
Item Number: 6100-SP-SM-1616-TV



Product characteristics:

The extrusion is made from high quality Silicone, and is designed for flexible LED strips that are 8 - 10mm wide. Standard Silicone soft end caps and aluminum mounting clips are used for the extrusion as supplementary accessories. End caps protect the extrusion from dust and other undesirable elements, which can make LED strips dirty and consequently deteriorate the lighting parameters. The extrusion can be mounted to surfaces with the use of double-sided adhesive tape or mounting brackets. The mounting bracket guarantees easy and secure mounting of the extrusion to a desired surface. It can also be used as a connector between extrusions.

Products related to the Extrusion:

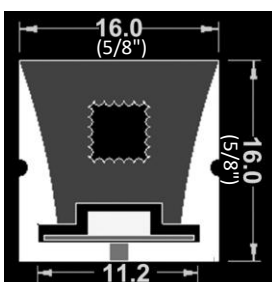


Silicone end caps



Aluminum mounting clip

Dimension Drawing:



(Max 10mm Wide PCB)

LOVO™ Flexible Silicone LED Profile

Item Number: 6100-SP-SM-1616-TV



Technical Specifications:

Ingress Protection Rating:	IP67
Available lengths:	Max 50m, standard 5m/reel.
Material:	Body – Silicone tube, end cap –silicone, mounting bracket-aluminum
Lighting Transmittance:	Opal Cover, 50%.
Operating temperature range:	30~+100°C
UV stability:	Ageing resistance more than 3 years.
Heat stability:	Under 100°C.
Manufacturing tolerances:	±0.5mm.

Applications:

Prism's LOVO™ Flexible Silicone LED Profile is a great option for a NEON lighting effect. It can be used indoor or outdoor as accent lighting. It works great with our LOVO™Flex LED Strips including White, Red, Green, Blue, RGB, and many more options available.

