

# LOVO™ PL3 LED PUCK LIGHT

Item Number: 3030-PL3-3W24V-3IN-xK-xxFIN

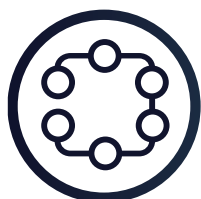


Plug-and-Play Lovo LED recessed down lights are an easy-to-use, safer and affordable solution for Residential, Commercial applications, brightening up retail displays, functional work areas, and any space where recessed lighting is required! Easy plug-and-play technology combined with dimmable control, various surface or flush mount options, natural color, magnetic trims, selectable white tuning and High CRI With less raw materials than conventional recessed LED fixtures makes this far more environmentally friendly.



## FEATURES

- PWM Dimmable
- Input 24V DC
- 3 Watts
- 80 CRI (Ra)
- Recessed or Surface Mounted
- White or Silver Finish
- Beam Angle 100°
- Easy Connect Lighting System
- Safe Plug and Play Connection
- 5ft FC Male/Female Extension Cable Included
- cTUVus (UL Compliant)



LINKABLE  
MAX. 6PCS



SAFE VOLTAGE



PWM DIMMABLE



5 YEAR  
WARRANTY



IP21 RATED



ENERGY  
EFFICIENT



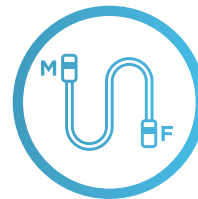
INDOOR



PATENT  
PENDING



SMART  
COMPATIBLE



5FT FC CABLE  
EXTENSION INCLUDED

# LOVO™ PL3 LED PUCK LIGHT

Item Number: 3030-PL3-3W24V-3IN-xK-xxFIN



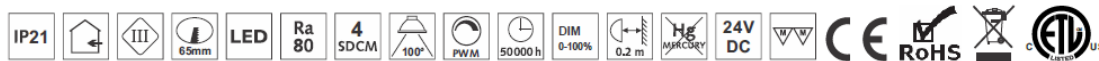
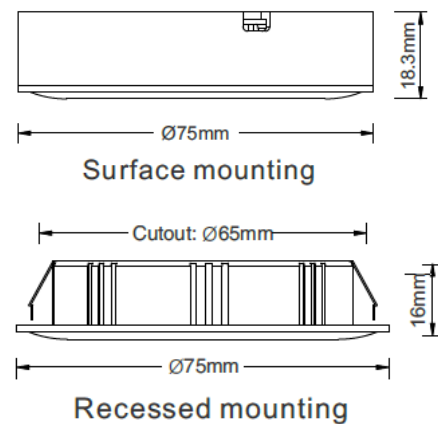
## SPECIFICATIONS

Product Number	3030-PL3-3W24V-3IN-xK-xxFIN
Color Temperature (xK):	3000K (3K) 5000K (5K)
Power Consumption (W):	3 Watts
Input Voltage:	24V DC
Light Source:	3pcs 1W high power LED
Lumens:	70lm/W
CRI:	80
Beam Angle:	100°C
Material:	High quality heat conductive Plastics
Fixture Trim Color (xxFin):	White (WH) Silver (SLV)
IP Grade	IC Rated, IP 21
Dimming	PWM Dimmable
Cut Out:	65mm
Surface Mount Dimensions:	75 D X 18.3mm H
Recessed Mount Dimensions:	75D X 16mm H
Environment	Indoor use
Operation Temperature	Max Ta=30°C
Certification:	cTUVus
Lifespan	50,000hrs

## FINISH COLOR

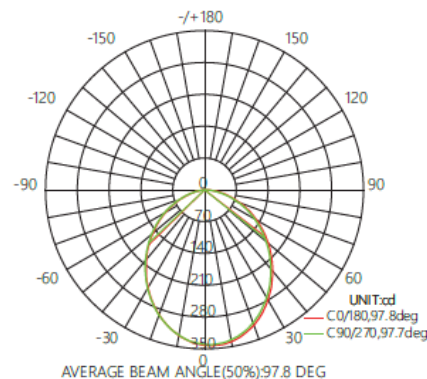


## DIMENSIONS



## GONIOPHOTOMETERS SYSTEM TEST REPORT

100°	H(m)	Lux	Ø(cm)
	1	342.3	227.68
	2	85.58	455.36
	3	38.03	683.03
	4	21.39	910.71
	5	13.69	1138.4



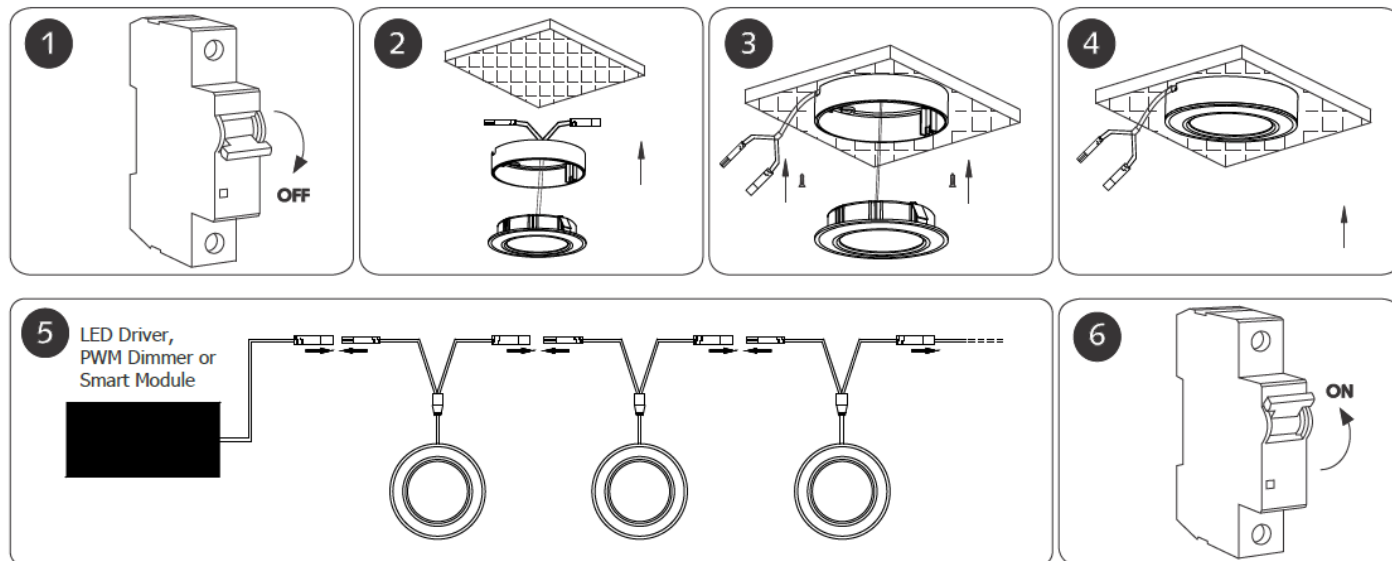
# LOVO™ PL3 LED PUCK LIGHT

Item Number: 3030-PL3-3W24V-3IN-xK-xxFIN



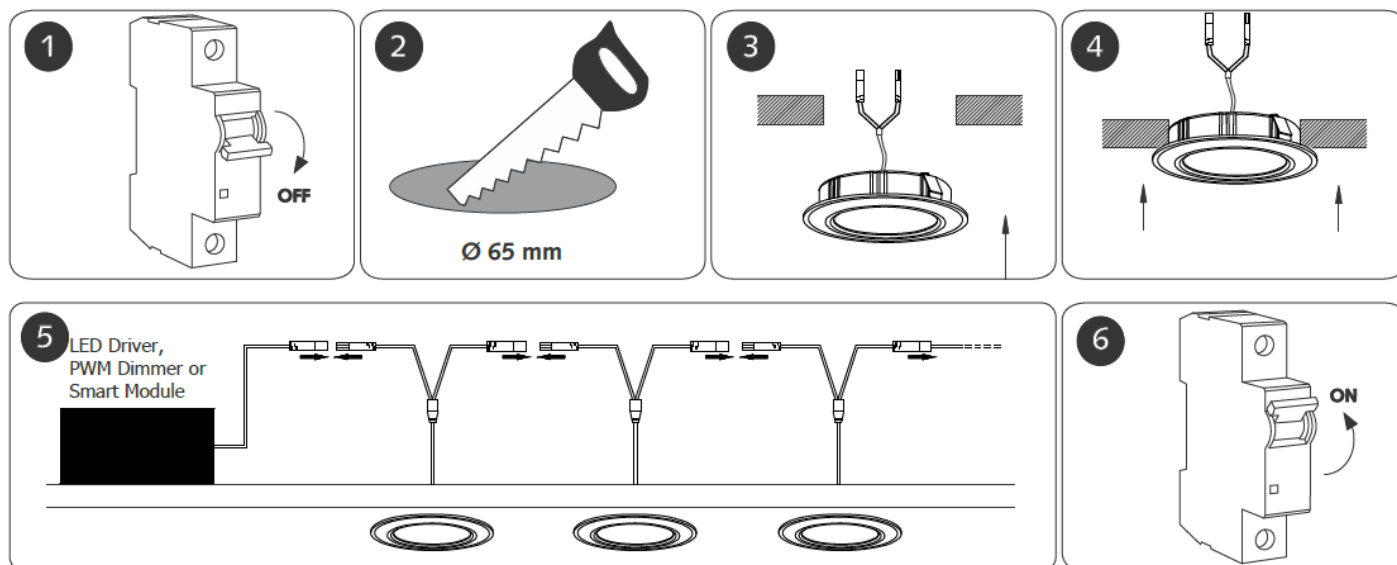
## INSTALLATION

### Surface mounting



\*Maximum 6 lights in series, We suggest Y distributor before first light if more than 6 lights are required for one area.

### Recessed mounting



\*Maximum 6 lights in series, We suggest Y distributor before first light if more than 6 lights are required for one area.

# LOVO™ PL3 LED PUCK LIGHT

Item Number: 3030-PL3-3W24V-3IN-xK-xxFIN



## APPLICATIONS

- Display Cases
- Trade Show Exhibits
- Museum Environments
- Jewelry Cabinets
- Office
- Residential
- Commercial



## CAUTION

- DO NOT Connect LED Recessed Light to any voltage other than 24VDC, failure to do so may cause permanent damage to the recessed light.
- When Dimming, only compatible with PWM (Pulse Width Modulation).
- Do NOT plug the driver to AC outlet before the LED Recessed Light is properly connected, it may damage the function of the LED light.
- Locate the driver in a well ventilated and accessible area as well as free from any insulating material.
- It is recommended that 20cm of open space be provided around the driver and 7.5cm around lamp housing to permit air circulation.
- We recommend you follow all local safety authority rules and regulations when installing our Prism Lovo Series products.
- Do not install or operate LED Recessed Light kit into a completely sealed environment.
- Do not install or operate LED Recessed Light kit in an environment that has humidity levels above 70%.

## WARRANTY

Prism Lighting Group Warrants to its customers who purchase its LED fixtures that the products are free from defects in material and workmanship from the date of shipment. During warranty period, Prism Lighting Group, at their discretion, agrees and shall be obligated to a limit of refund of the purchase price of the products or replacement of fixtures.

This limited warranty will not apply to loss or damage to the product caused by: damage due to fire or acts of God; vandalism; civil disturbances; accident; failure to follow installation, operating or maintenance. This limited warranty excludes field labor and service charges related to the repair or replacement of the Product.

Complete warranty details for fixtures are available. Please contact Prism Lighting Group at 1-866-600-1380 or [info@prismlightinggroup.com](mailto:info@prismlightinggroup.com).