







Features:




1. IP65
2. 3014 LED
3. 3.8W/Ft (12.5W/M)
4. 24V DC
5. CRI> 80
6. Dot-free illumination
7. Positive lighting: can only be bent vertically
8. Indoor and outdoor application
9. Dimension: 1/2" x 3/8" (12X10mm) ;
10. First-class PVC material,UV-resistant
11. Cuttable, cutting section is 1.5" (38.5mm)

Technical parameters:

Model	Luminous Flux (lm/m)	Max.Length (m)	Min.Length (mm)	DC Voltage (V)	LED Qty. (pcs/m)	Rated Watt (w/m)	Rated Current (A/M)
PLG-TSID-W-M-24V	699	5	38.5	DC24	182	12.5	0.52
PLG-TSID-NW-M-24V	707						
PLG-TSID-WW-M-24V	527						
PLG-TSID-R-M-24V	46						
PLG-TSID-G-M-24V	468						
PLG-TSID-B-M-24V	96						

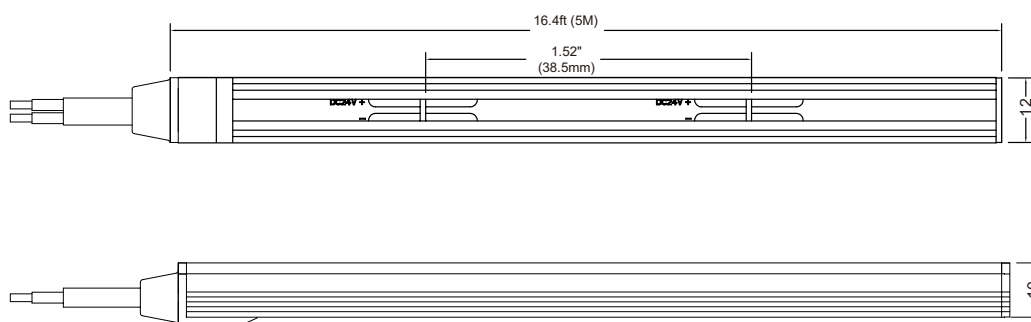
Accessories:

Name	Description	Quantity
External lock clip		1pcs/reel
End cap		1pcs/reel
Mounting clips		20pcs/reel
Waterproof silicon tape		1pcs/reel

Name	Description	Quantity
Cable connector		1pcs/reel
Inner lock clip		1pcs/reel
Screws		2pcs/reel

Dimension & Circuit Drawings:

Unit:(mm)



wire of LED strip can extend from 3 directions as below figure:

wire extend from head



wire extend from side

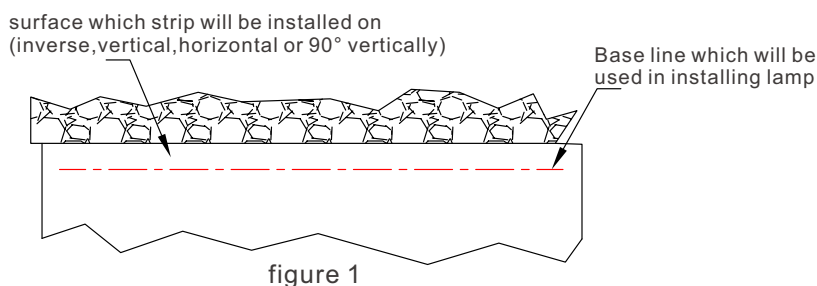


wire extend from bottom

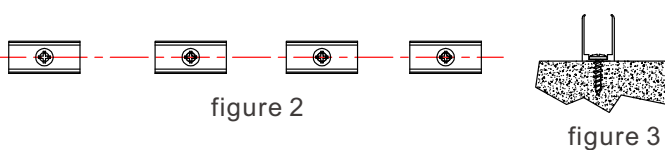


Installation Instruction:

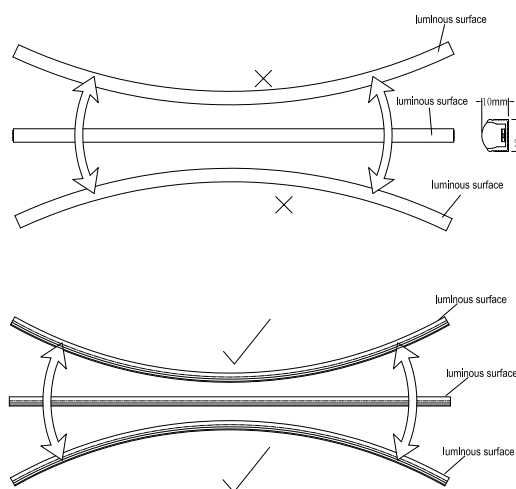
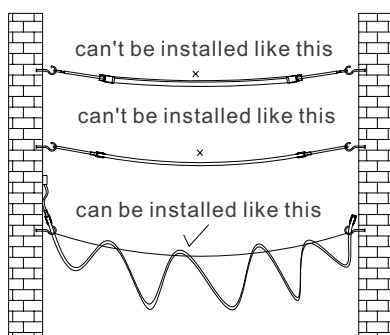
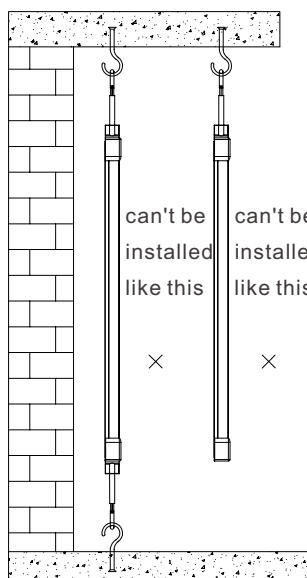
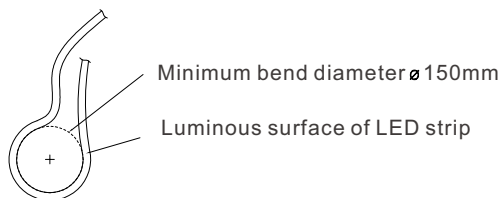
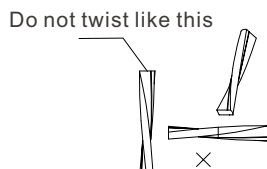
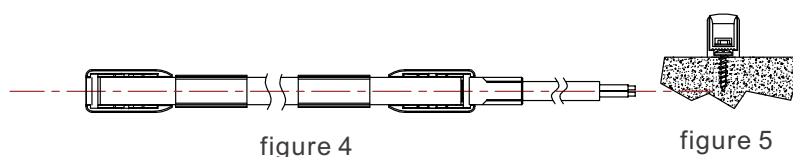
1. Pull a parallel string on which the LED strip will be installed; as figure 1



2. Fix the clip on the base line, and the distance depends on practical situation, figure 2, figure 3;

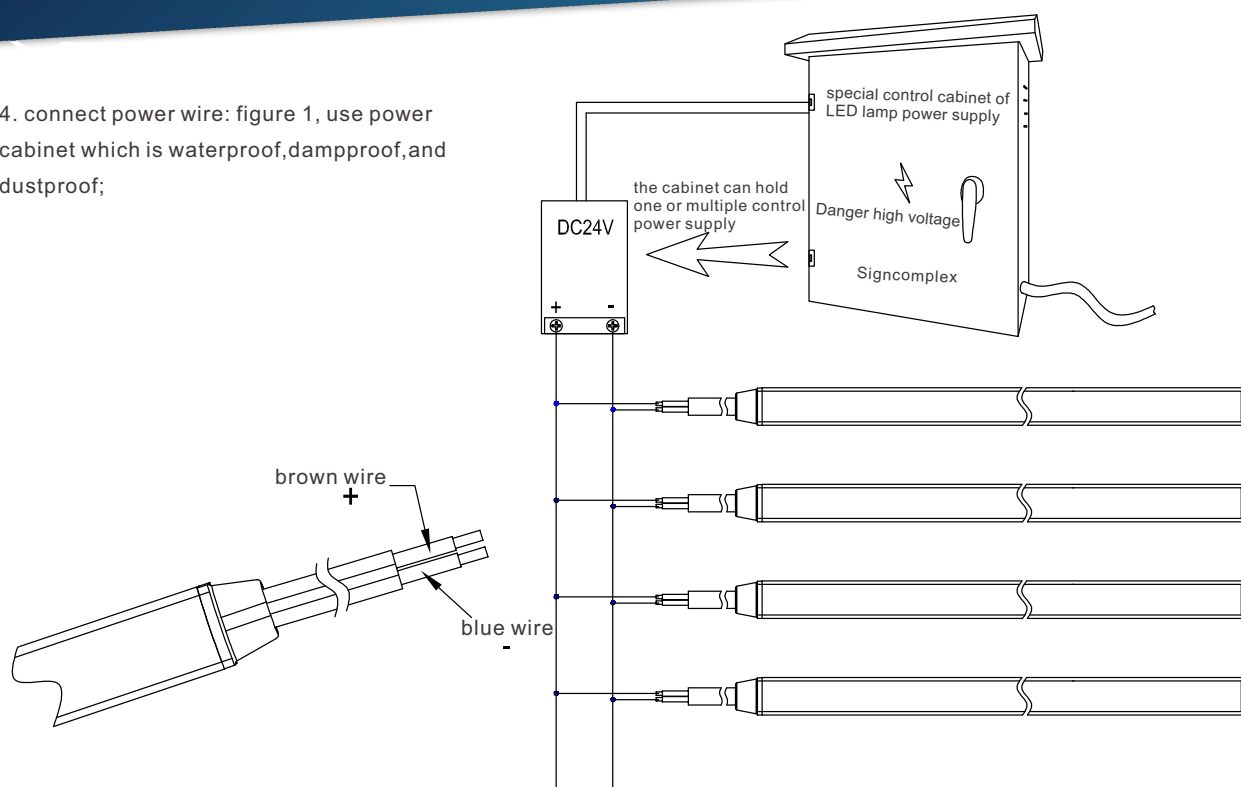


3. After the clip is fixed, insert the LED strip into the slot with luminous surface closing to the thumb; The maximum installation angle can't exceed 60°. as figure 4 figure 5;



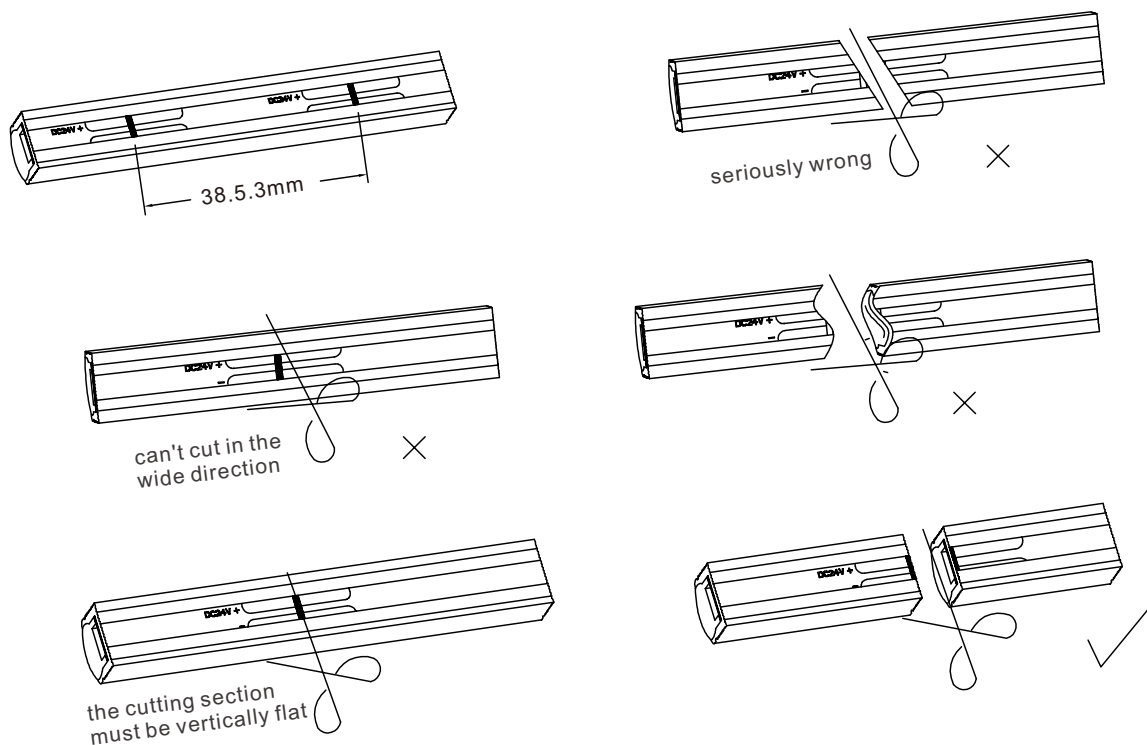
Can be bent into various shapes of life

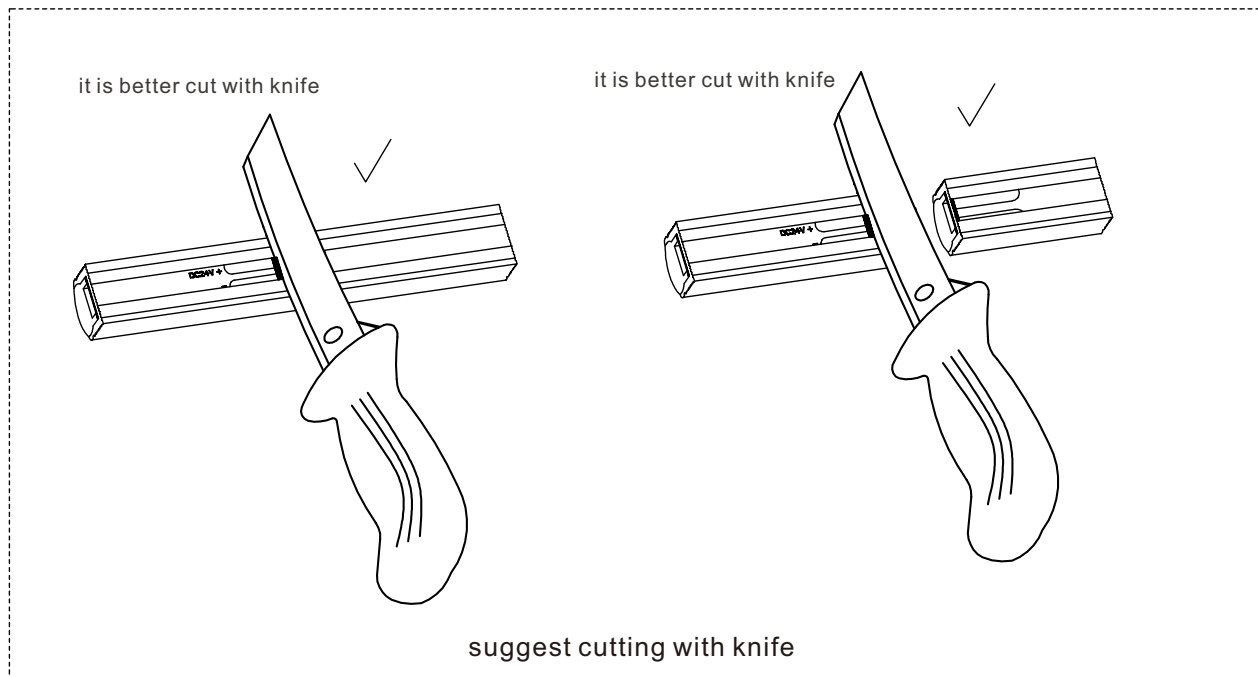
4. connect power wire: figure 1, use power cabinet which is waterproof, dampproof, and dustproof;



Cutting and assembly instruction:

Back of the LED strip is designed with transparent plastic material, and the cutting line of PCB can be seen, so please cut the strip according to cutting line on the back.

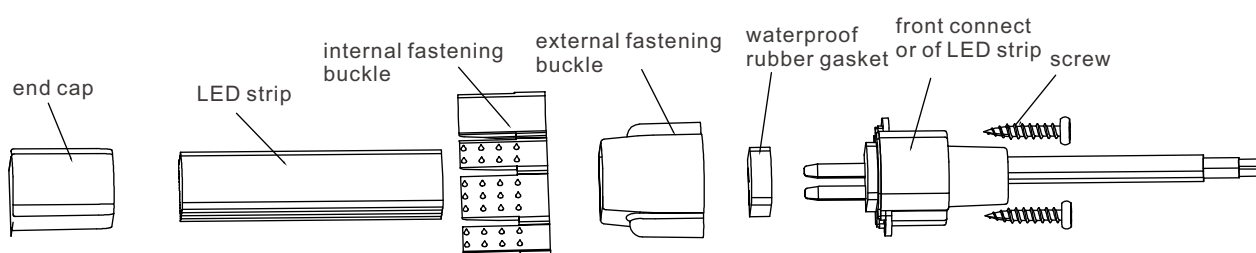




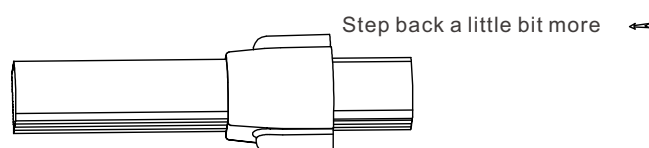
Installation after Cutting LED Strip

I. Installation of front connector cable

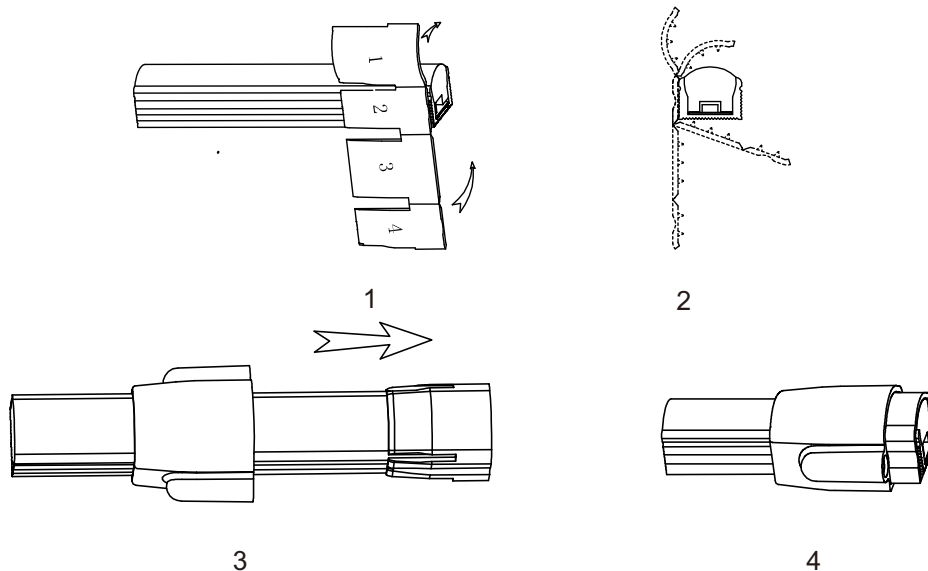
1. Prepare LED strip and accessories, and the section of LED strip must be flat and smooth;



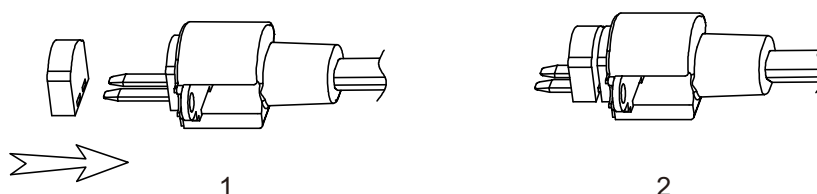
2. First intall external fastening buckle



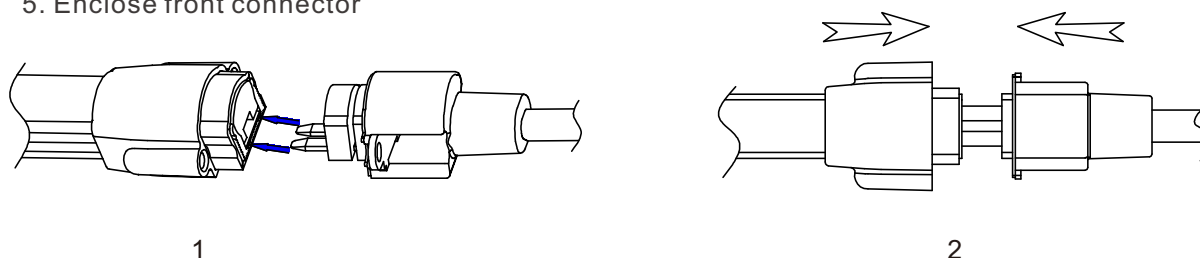
3. Install internal fastening buckle: hold the head of LED strip with left hand, and wrap the unfolded internal fastening buckle around the head of LED strip; thumb of the left hand press the part 2 of internal fastening buckle, and warp the part 1, part 3 and part 4 around the head the LED strip; clench 4 parts of the internal fastening buckle, then sleeve the external fastening buckle to half of the internal fastening buckle.



4. Embed waterproof glue



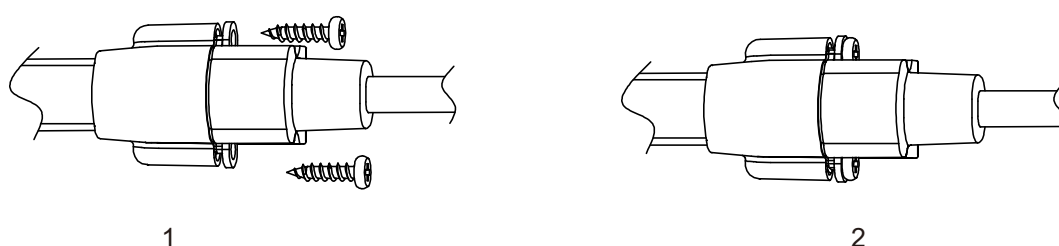
5. Enclose front connector



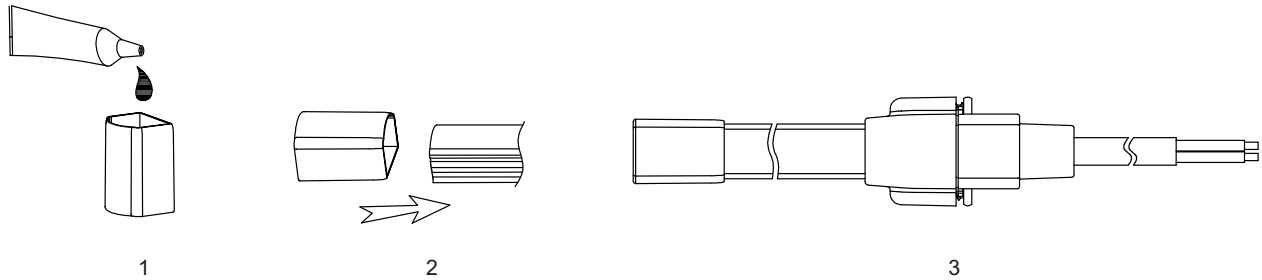
align contact pin to reverse side welding plate

Push the external fastening buckle and front connector inward slowly until joint

6. Use screws to fasten;



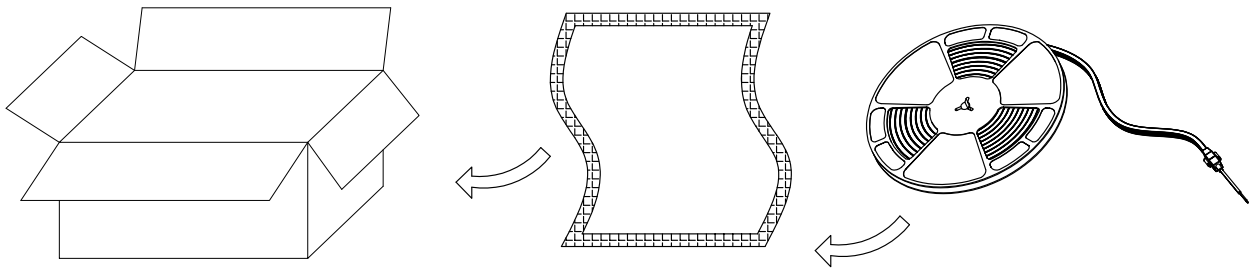
II. Installation of end cap



1. Drop the glue into the end cap;

2. Insert the LED strip into end cap slowly, and drag back and forth several times, then insert the LED strip into bottom of end cap.

Packing instruction:



Safety information:

1. The LED strip should be installed on the surface of flame retardant, and thickness of wood or material exceed 2mm;
2. Please read the specification first, to make sure the service environment matches the condition in the specification before using;
3. Please confirm input voltage, disconnect power before use;
4. Cut the strip according to the logo on the strip;
5. It can only be used neutral environments. (PH6-8);
6. Notice: If users cut LED strip to install by themselves, the IP grade of LED strip can't be guaranteed.