

# MAXRUN 4.5W/FT LOVO™FLEX CONSTANT CURRENT LED FLEXIBLE TAPE LIGHTING



Client:

Project:

Type:

Order Code:

Quantity:

Lovo™Flex MAXRUN Strips allows you to run low voltage Flexible LED Strip lighting further than ever before with continuous runs of 50ft (15M) to 65ft (20M). From accent lighting to compelling action lighting, Lovo™Flex MAXRUN Strips make your image stand out from the crowd! It provides an affordable, low energy consumption solution where stability and longevity are paramount. Manufactured with top-tier authentic premium Epistar LED chips, the SMD LED Flexible Strips are built to last. In addition to low energy consumption, these strips operate at a low temperature which means they can be used just about anywhere. They are designed for interior and exterior use and can bend and twist in just about any direction imaginable.

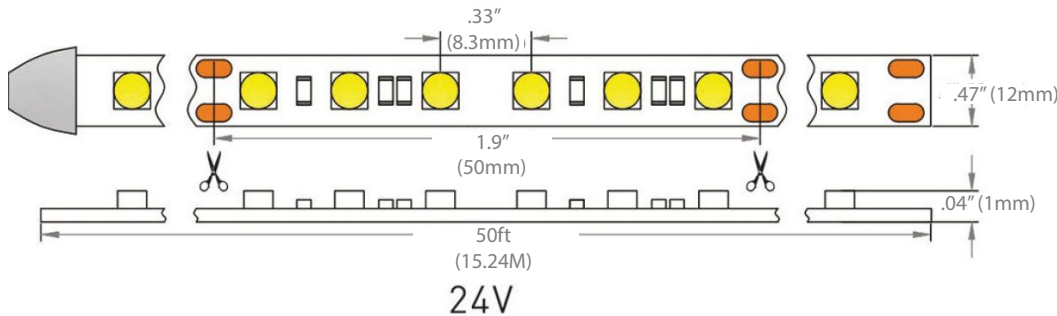
## SPECIFICATIONS

Product Number	<b>6060-FLCC-4.5W24V-xxK</b>
Voltage	24VDC
Length	20Ft (6M) and 65Ft (20M)
Color Temperature	2700K, 3000K, 4000K, 6000K
Wattage	4.5 Watts/Ft / 14.4 Watts/M
CRI	>90
Lumens	2700K - 277lm/Ft / 910lm/M (Ultra Warm White) 3000K - 302lm/Ft / 990lm/M (Warm White) 4000K - 338lm/Ft / 1110lm/M (Natural White) 6000K - 365lm/Ft / 1200lm/M (Pure White)
Maximum Run	50ft / 15M
Beam Angle	120 degree
Dimming	Yes
Material	White PCB, Tesa® Tape Backing
Cuttability	Every 2" (50mm)
IP Rating	IP43 (IP65 or Other IP options Available Upon Request)
Dimensions	12mm (.47") W x 1mm (.04") H x Reel Length
Switching	Hardwire or Plug-in
Mounting	Attached Tesa® Tape or Extrusions
LED Type & Size	Premium Epistar SMD 2835
LED Qty	36 LEDs/ft / 120 LEDs/M
Rated Life	50,000 Hours
Warranty	5 Years
Certifications	cULus 469399

# MAXRUN 4.5W/FT LOVO™FLEX CONSTANT CURRENT LED FLEXIBLE TAPE LIGHTING



## DIMENSIONS



## ORDER CODES

6060-FLCC-4.5W24V-

COLOR:  
27K = 2700K  
3K = 3000K  
4K = 4000K  
6K = 6000K

IP:  
IP43  
IP65

## RELATED PRODUCTS

POWER SUPPLIES \*More Power Supplies Available Upon Request



### PLUG-IN

**Item #5000-PSU-20W24V**

20 Watt 24 Volt with FC Connector

**Item #5000-PSU-60W24V**

60 Watt 24 Volt with FC Connector

**Item #5000-PSU-96W24V**

96 Watt 24 Volt with FC Connector



### HARDWIRE 0-10V Dimming Class 2 UL Listed

**Item #5150-PSU-7512V**

75 Watt 12Vdc

**Item #5150-PSU-10024V**

100 Watt 24Vdc



### HARDWIRE CV NON Dimming Constant Voltage, Class 2 UL Listed

**Item #5015-PSU-60W24V-JB-CL2**

60W 24Vdc 120-277V PSU c/w JBox, CI2, Non Dim IP20, UL Listed

**Item #5015-PSU-96W24V-JB-CL2**

96W 24Vdc 120-277V PSU c/w JBox, CI2, Non Dim IP20, UL Listed

**Item #5040-PSU-2X96W24V-JB-CL2**

2x96W 24Vdc 120-277V PSU c/w JBox, CI2, Non Dim IP20, UL Listed

**Item #5040-PSU-3X96W24V-JB-CL2**

3x96W 24Vdc 120-277V PSU c/w JBox, CI2, Non Dim IP20, UL Listed

**Item #5040-PSU-4X96W24V-JB-CL2**

4x96W 24Vdc 120-277V PSU c/w JBox, CI2, Non Dim IP20, UL Listed



### HARDWIRE TRIAC Dimming Constant Voltage, Class 2 UL Listed

**Item #5030-PSU-30W24V-TRI-DIM-JB-CL2**

30W 24Vdc 120-277V PSU c/w JBox, CI2, Triac Dim IP20, UL Listed

**Item #5030-PSU-60W24V-TRI-DIM-JB-CL2**

60W 24Vdc 120-277V PSU c/w JBox, CI2, Triac Dim IP20, UL Listed

**Item #5030-PSU-96W24V-TRI-DIM-JB-CL2**

96W 24Vdc 120-277V PSU c/w JBox, CI2, Triac Dim IP20, UL Listed

**Item #5030-PSU-2x96W24V-TRI-DIM-CL2**

2x96W 24Vdc 120-277V PSU c/w JBox, CI2, Triac Dim IP20, UL Listed

**Item #5030-PSU-3x96W24V-TRI-DIM-CL2**

3x96W 24Vdc 120-277V PSU c/w JBox, CI2, Triac Dim IP20, UL Listed

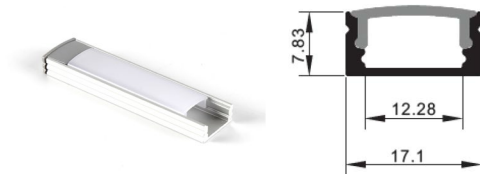
# MAXRUN 4.5W/FT LOVO™FLEX CONSTANT CURRENT LED FLEXIBLE TAPE LIGHTING



## RELATED PRODUCTS

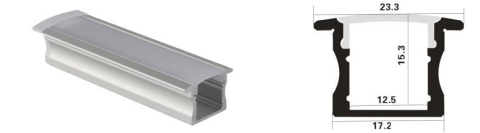
ALUMINUM PROFILE EXTRUSIONS (Please see individual channel spec sheets for accessory details)

\*More Aluminum Profile Extrusions Available Upon Request



### Item #6100-AP-SM-1708

Slim Aluminum LED Profile with Frosted Cover  
.67" W x .31" H x 8ft L  
17.1mm W x 7.83mm H x 2400mm L  
C/W 2 End Caps and 2 Clips



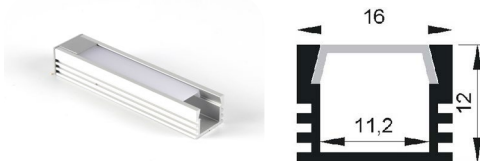
### Item #6100-AP-RC-2515

Low Profile- Recessed, Slim Height  
.98" W X .6" H x 8ft L  
25mm W x 15mm H x 2400mm L  
C/W 2 End Caps and 2 Clips



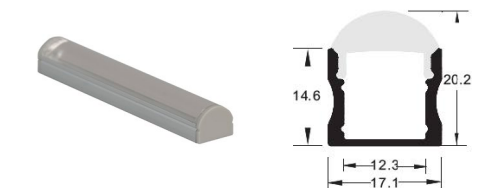
### Item #6100-AP-SM-1919

Slim Aluminum Recessed LED Profile with Frosted Cover  
.75" W x .75" H x 8ft  
19mm W x 19mm H x 2400mm L  
C/W 2 End Caps and 2 Clips



### Item #6100-AP-SM-1612

Slim Aluminum Recessed LED Profile with Frosted Cover  
.63" W x .47" H x 8ft  
16mm W x 12mm H x 2400mm L  
C/W 2 End Caps and 2 Clips



### Item #6100-AP-SM-1715-30DG

### Item #6100-AP-SM-1715-60DG

Slim Aluminum LED Profile  
with 30 or 60 Degree Clear Lens  
.67" W x .6" H x 8ft L  
17mm W x 15mm H x 2400mm L  
C/W 2 End Caps and 2 Clips



### Item #6100-AP-SM-1715

Aluminum Led Tapered Profile With Cover  
.67" W x .60" H x 8ft  
17.1mm W x 15mm H x 2400mm L  
C/W 2 End Caps and 2 Clips



### Item #6100-AP-SM-2119ABC

Aluminum Led Profile With Frosted Cover

#### A- Round Frosted Lens Profile

.77" W x .79" H x 8ft  
19.5mm W x 19.95mm H x 2400mm L



#### B- Square Frosted Lens Profile

.77" W x .83" H x 8ft  
19.5mm W x 21.05mm H x 2400mm L



#### C-Rectangle Frosted Lens Profile

.77" W x 1.42" H x 8ft  
19.5mm W x 36.07mm H x 2400mm L  
C/W 2 End Caps and 2 Clips

# MAXRUN 4.5W/FT LOVO™FLEX CONSTANT CURRENT LED FLEXIBLE TAPE LIGHTING



## RELATED PRODUCTS

LOVO™SNAP SOLDERLESS CONNECTORS (Please see individual spec sheets for accessory details)

\*More Connectors Available Upon Request



**Solder Tip to SNAP Connector**  
**Item #8230-SNP-LVT-2C-10mm**  
2 Pin 10mm  
Single Color  
Available in IP43 or IP67  
12" (300mm) Long



**FC to SNAP Connector**  
**Item #8230-SNP-FC-M-2C-10mm**  
Male End  
2 Pin 10mm  
Single Color  
Available in IP43 or IP67  
12" (300mm) Long



**FC to SNAP Connector**  
**Item #8230-SNP-FC-F-2C-10mm**  
Female  
2 Pin 10mm  
Single Color  
Available in IP43 or IP67  
12" (300mm) Long

LOVO™SECURE LOCK SOLDERLESS CONNECTORS(Please see individual spec sheets for accessory details)



**2 Point 10mm Strip to Wire**  
**Item #8300-SCSW-10mm-LVT-2C**  
2 Pin 10mm IP43  
Single Color Strip to Power with Wire  
Voltage Range 1-24V  
6 Amps Maximum  
6" (152.4mm) Long



**2 Point 10mm Strip To Strip**  
**Item #8300-SCSS-10mm-2PT**  
2 Pin 10mm IP43  
Voltage Range 1-24V  
6 Amps Maximum  
Single Color

LOVO™FC "FAST CONNECT" CABLE SYSTEM (Please see individual spec sheets for accessory details)



**Solder Tip - Male**  
**Item #8100-FC-M-2C-4in**  
**8100-FC-M-2C-1ft**  
24V Max 6 Amps  
4" or 12" Male to Raw  
Wire Barrel Connector



**Solder Tip - Female**  
**Item #8100-FC-F-2C-4in**  
**8100-FC-F-2C-1ft**  
24V Max 6 Amps  
4" or 12" Female to Raw  
Wire Barrel Connector



**Extensions**  
**Item #8110-FC-EXT-2C**  
Available in 1.5ft, 3Ft, 5ft,  
6Ft, 10ft, or 16ft  
Male to Female Extension  
Barrel Connector Cables  
24 Max 6 Amps

LOVO™FC "FAST CONNECT" SPLITTERS



**2-Way Splitter**  
**Item #8120-FC-2Y-2C-1.5ft**  
24 Max 6 Amps  
2 Way Adapter



**6-Way Splitter**  
**Item #8120-FC-6Y-2C-1.5ft**  
24 Max 6 Amps  
6 Way Adapter



**2-Way Block**  
**Item #8120-FC-2Y-BLC**  
24 Max 6 Amps  
2 Way Adapter

LED DIMMING CONTROLLERS \*More Lighting Controllers Available Upon Request



**PLG-M1 Dimming Remote**  
**Item #8000-CTRL-D**  
Working Voltage: 3 Vdc  
(Battery CR2032)  
Working Frequency: 433.92 MHz  
Remote Distance: 100ft  
Working Temp: -30C~55 C  
Weight (N.W.): 42g



**Prism TRIAC Dimmer**  
120V Rated  
150 Watt LED/CFL  
600 Watt Incan/Halogen  
Available in most finish colors  
More Compatible Dimmer List Available upon Request

# MAXRUN 4.5W/FT LOVO™FLEX CONSTANT CURRENT LED FLEXIBLE TAPE LIGHTING



## INSTALLATION

- For outdoor use, make sure all connectors are sealed with silicone and shrink tube and drivers are housed in weatherproof enclosures.
- M Series Dimmer (PWM) must have 24V DC input (not line voltage)
- Dimming drivers are compatible with most triac, ELV and MLV dimmers with 10-100% light control
- Multiple extrusions are available for use in surface mount and recessed applications
- Simple Guide to sizing power supply with 4.5W/Ft LovoFlex Tape Lighting (based on 80% lighting wattage load on power)

### Power Supply

### Max. Number of Feet per Power Supply

20 Watt 24V DC Power Supply	3.5 Feet
30 Watt 24V DC Power Supply	5 Feet
60 Watt 24V DC Power Supply	10.5 Feet
96 Watt 24V DC Power Supply	17 Feet

\*For Multi 96W Output Class 2 Power Supplies each output can run maximum 17 Feet.

\*If beyond 25ft of LED Tape lighting, split into 2 circuits on 1 driver or divide the load based on max continuous run.

\*Recommended Max 80%

\*Larger power supplies available upon request.

## INFORMATIONAL VIDEOS

For more information, watch the LOVO Flexible Strip Series videos:



<https://youtu.be/kseubaC4rog>



<https://youtu.be/gcFl-rX73hA>



<https://youtu.be/kseubaC4rog>



<https://youtu.be/kseubaC4rog>